

**Mayfield Thermography & AITscan your only source for the following services:**

**Aerial Infrared Services**



- Aerial Infrared *Roof* Moisture Surveys
- Underground Steam System Surveys
- Electric Utility Transmission / Dist. Lines
- Animal Census, Environmental Surveys

**Electrical & Mechanical Infrared Services**

- Utility Substations & Transformers
- Main Switchgear, Incoming Lines
- Bus ducts, Power Distribution Panels
- Machine Control Panels
- UPS Systems and Generators
- *Electric Motor & Mechanical Systems*
- *Steam Systems Surveys*

**Process Control / R&D Services**

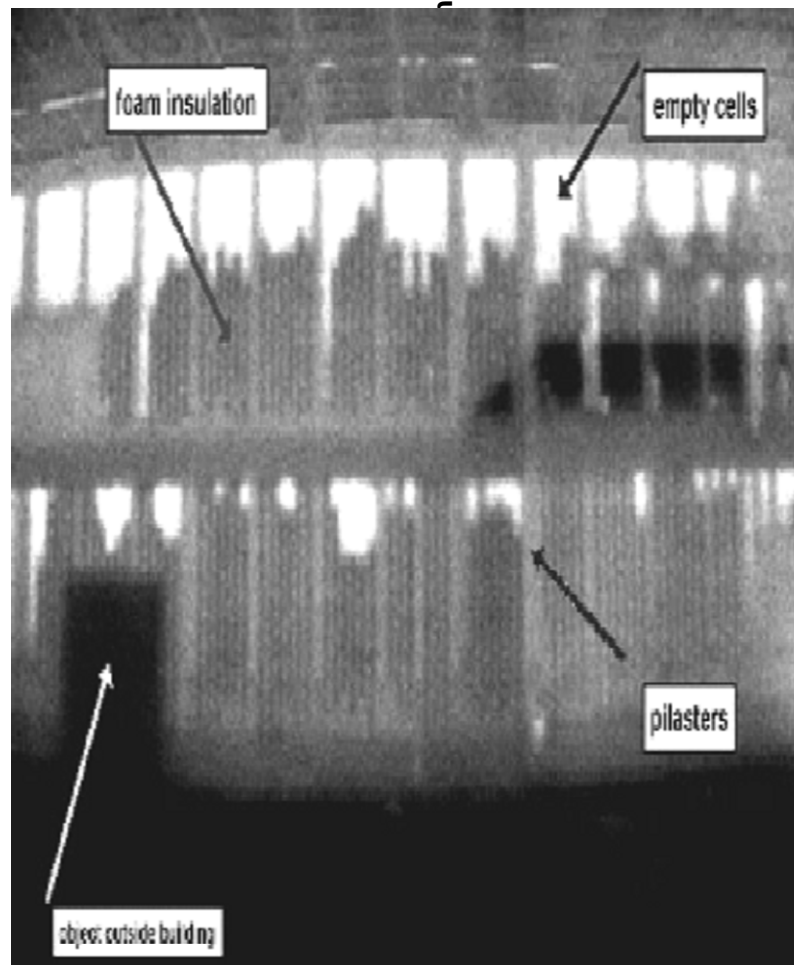
- *Machine Speed & Quality Assurance*
- *Infrared Analysis of Product and Lines*
- *Process Control Improvements*
- *Unbiased On-Line IR Feasibility Studies*
- *Infrared (FEA) Finite Element Analysis*
- *Pulp & Paper Machine Diagnostics*
- *Circuit Board Infrared Analysis*

**Building Q/A Service**

- *Building Heat Loss Analysis*
- *Cold Storage Warehouse Surveys*
- *Insulation Audit Surveys*
- *Building Structural Q/A Survey*
- and much more!

**Call Mayfield Thermography Today**  
**Office (972) 323-0058 Cell (214) 673-1984**

**CMU Masonry**



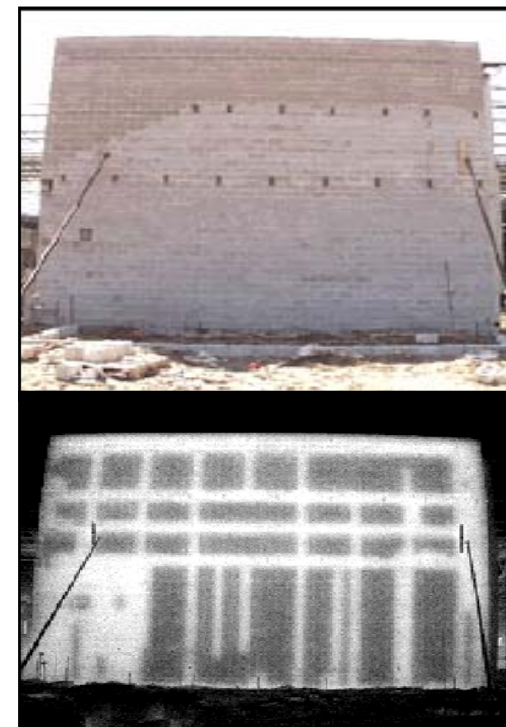
**“See” the foamed-in-place insulation.**



**NOTE: Solid areas are light-colored.**

**Mayfield Thermography** *Excellence*  
*in Infrared*  
**Consulting Services, Inc.** *Thermography*

**Building**  
**Quality Assurance**  
**Structural Surveys**



**Mayfield Thermography**  
**Consulting**  
**Services, Inc.**  
**(972) 323-0058**

On the World Wide Web at:

[www.mayfieldinfrared.com](http://www.mayfieldinfrared.com)

# Quality

## Get what you are paying for!

The owner/developer of a building should get the building that he designed. The value of a building is dependent not only on its location—but also the quality of the construction. The conditions of the paint, the flooring, fixtures, finishes, and to some extent the roof... are readily assessable. However, the purchaser of a building cannot see inside the walls and cannot make a judgment with regard to the structure itself.



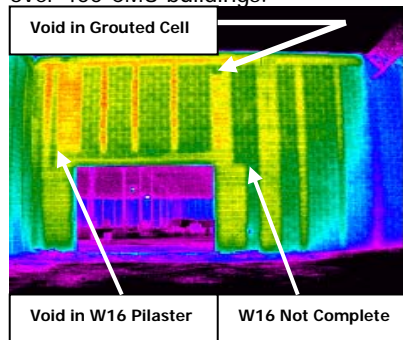
Nobody can afford to watch everything that is going on at a fast-tracked building site. When it comes to the CMU masonry walls ... you don't have to. *Mayfield Thermography & AITscan's infrared thermographers can survey your building after the walls are erected, but before*



### Testing the Walls!

repairs can get in the way of any other trade. We use the Sun's energy to create the conditions we need to inspect large walls quickly and efficiently. We then produce photo-quality infrared and visual reports on the faults. The repairman can easily see the problems and there is no question about the validity of the test. We have done extensive testing over the past 11 years and surveyed over 400 CMU buildings.

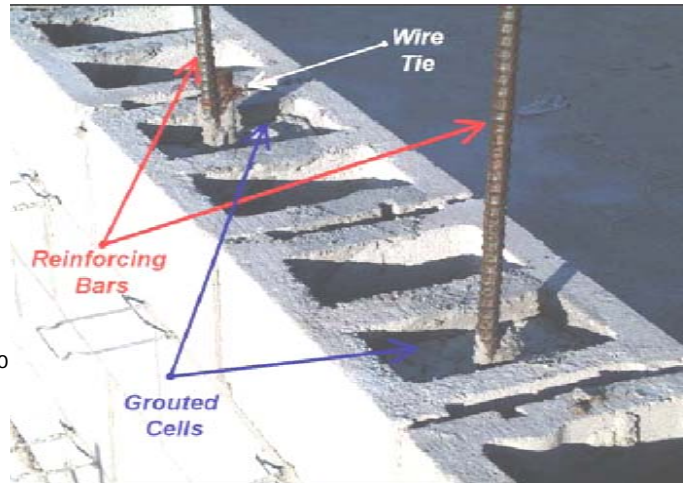
Here's how it works. Unlike X-ray, infrared testing on CMU masonry walls is fast and inexpensive. We use the slight differences in surface temperature to 'see' the different amounts of mass in the wall. The Sun heats and cools the walls of a building at different rates, based on the lesser grouted, insulated and/or empty cells in a wall, and higher amount of mass. We can then tell the difference between grouted, insulated and/or empty cell in a wall.



## Certified Infrared Thermographers

Everyone knows that experience and training are the most important factors in a testing company. Our Certified Infrared Thermographers know CMU construction! Each of our Building Q/A staff has spent time in the field on construction projects. We know how things are done in the real world and we know how to find problems before they occur. Mayfield Infrared uses state-of-the-art infrared systems which are at your disposal. We have the latest focal plane array infrared cameras and proprietary infrared image-processing software. These cameras (PtSi/CMOS) have the capability of measuring differences in temperature as low as 1 / 1 0th of 1 degree C.

### Visual Image of a CMU Wall during construction.



### World-Class Reporting

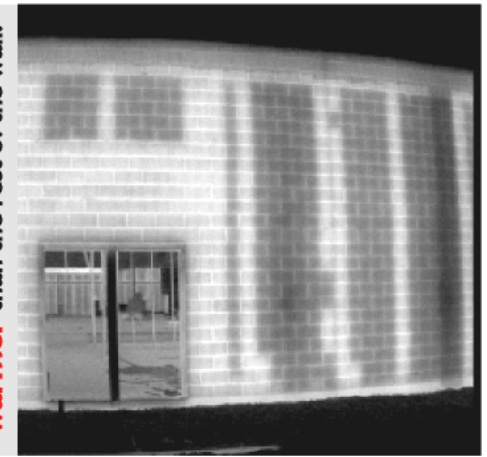
Your Building Quality Assurance Infrared Survey includes not only a thorough inspection ... but also a thorough report, printed on photographic paper.

The bound report

- Two-page Thermographic reports of problems with multiple thermographs and photographs. Plans marked to indicate faults.

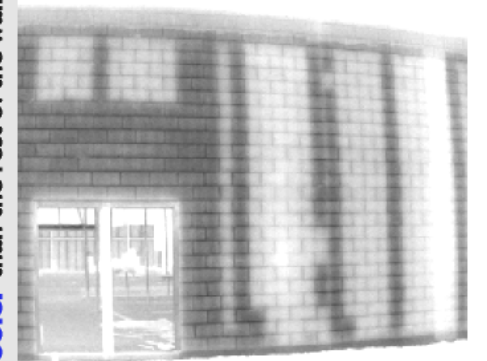
Summary of findings.

Infrared Image of a CMU Wall during the night. Pilasters are warmer than the rest of the wall.



Infrared Thermographs of a CMU Wall

Infrared Image of a CMU Wall during the day. Pilasters are cooler than the rest of the wall.



**Your building can effectively be checked for misplaced or incomplete grouting during the construction.**

**This will save you from finding out too late, that the building has a faulty structure. Have the CMU walls of your next project checked by**

**Mayfield Thermography**

**Consulting Services, Inc.**